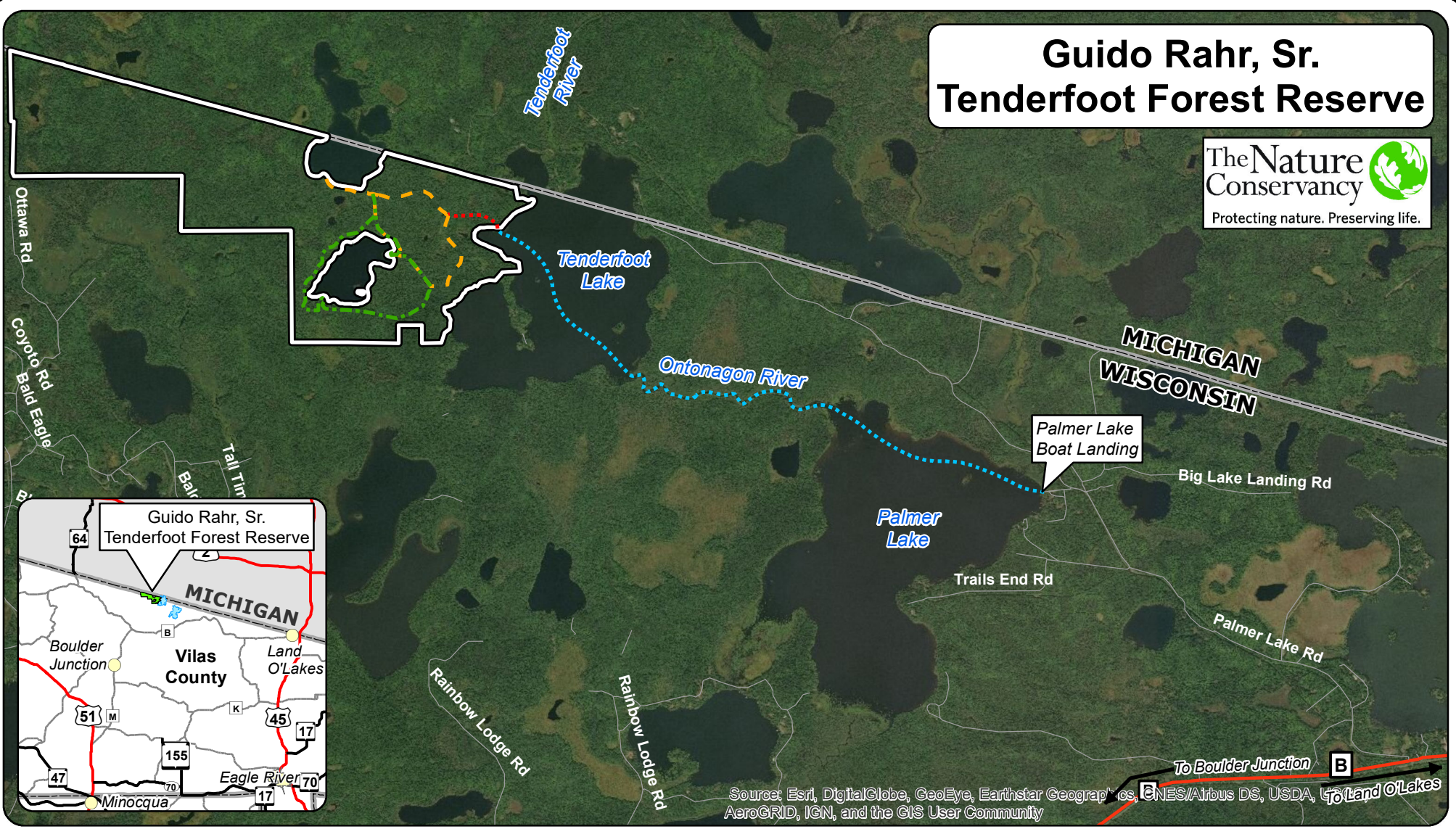
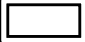







# Guido Rahr, Sr. Tenderfoot Forest Reserve

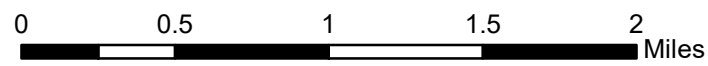


Source: Esri, DigitalGlobe, GeoEye, Earthstar Geographics, CNES/Airbus DS, USDA, AeroGRID, IGN, and the GIS User Community

-  Preserve boundary
-  Borden Family Trail - 2 mile loop
-  Michael & Arlene Litvinoff Trail - 1.9 mile loop
-  Boat Route
-  Entrance Trail - 0.3 miles
-  State Border



**Northwoods Office**  
 8648 Highway 51 North, Unit 3  
 Minocqua, WI 54548  
 715-388-7171



Directions: Access to Tenderfoot is by water from the Palmer Lake boat landing.

From Minocqua (approximately 27 miles): Take Hwy 51 north to County Hwy M through Boulder Junction to County Hwy B. Turn right (east) on Hwy B and go approximately 9 miles to Palmer Lake Road. Go 2 miles on Palmer Lake Road to boat launch.

Travel by boat/canoe across north end of Palmer Lake to Ontonagon River. Travel down river to Tenderfoot Lake, around the island, and northwest across the lake to TNC boat landing on opposite shore. Total distance is approximately 3 miles one way; travel time by canoe/kayak is about 1 hour one way.